

# OXLEY turns 200...

'Oxley Plains' was named by the explorers Hume and Hovell on 25 November 1824 on their overland journey from Lake George NSW to Port Phillip Bay.

To commemorate this historic milestone, we will unveil a bronze plaque at the Oxley Shire Hall on Saturday, 30th November 2024.



HUME AND HOVELL CROSSING THE MURRAY IN 1824

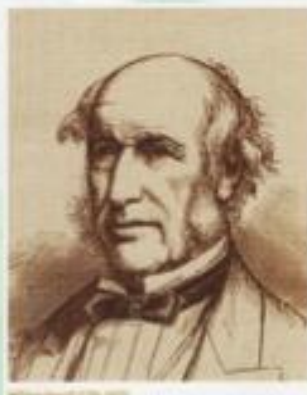
The community event includes:

12.30 p.m. A free community BBQ, including live music; an historical display and afternoon tea

2 p.m. Plaque unveiling by Dr Helen Haines, MP for Indi

BYO:

- chair
- rug
- drinks



Enquiries: [ora3678@gmail.com](mailto:ora3678@gmail.com)



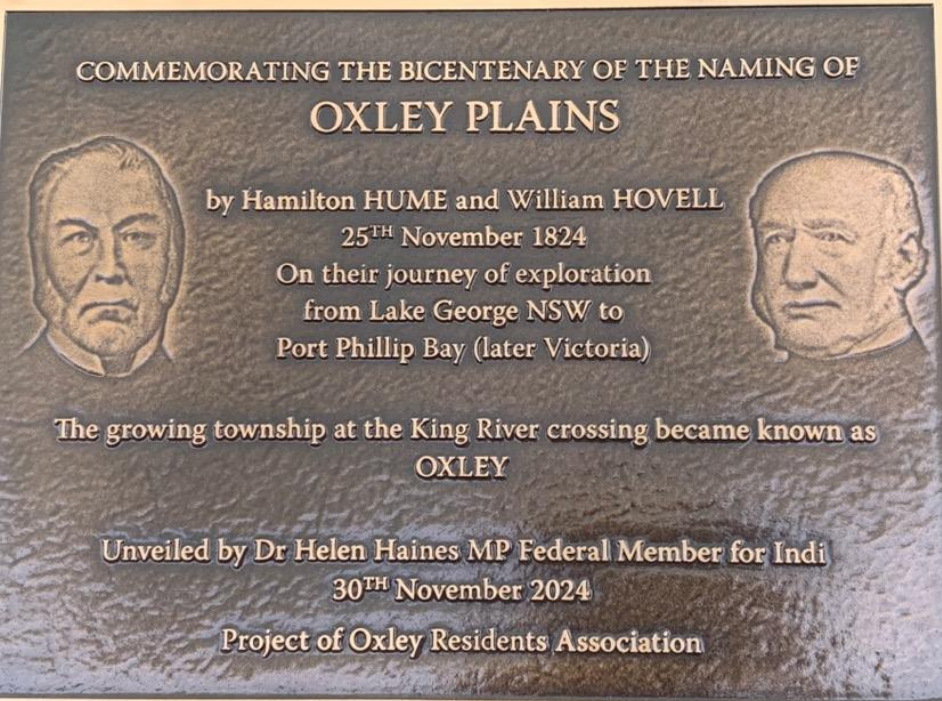
The Hume and Hovell bicentenary brass plaque was installed temporarily for the unveiling of the brass plaque event held at the Oxley Shire Hall on Saturday 30th November 2024 to celebrate 200 years since the naming of Oxley Plains.



The unveiling of the Hume and Hovell bicentenary brass plaque was performed at the Oxley Shire Hall by the sitting federal MP for Indi Dr Helen Haines at 2pm<sup>th</sup> November 2024



Pictured with the plaque from left, Russell Goode, Annette Woods, Alison Stephens, Dr Helen Haines (MP for Indi), Don Heath, Paula McGavin, Neil Brock Jannet Heath and Sally Day.





The Hume & Hovell bicentenary plaque at its temporary location at the Oxley Shire Hall after the unveiling ceremony.



The Master of Ceremonies Jamie Boatwood officiating at the unveiling ceremony.



The cutting of the bicentenary cake was performed by one of the longest living residents from the Oxley area Mr Graeme Vincent.





Oxley residents and visitors' celebration the event at the afternoon tea inside the Oxley Shire Hall.



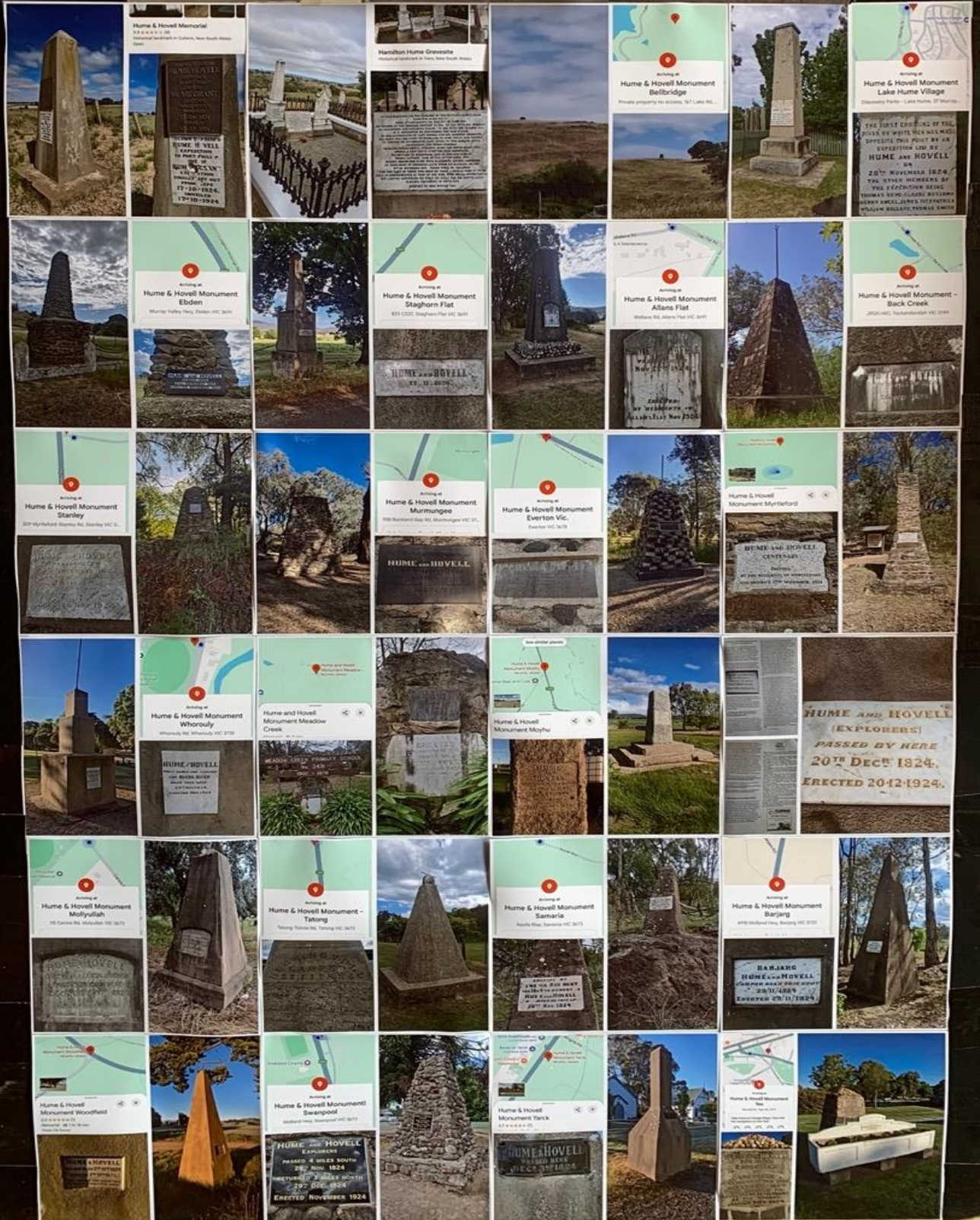




# Hume and Hovell Centenary-1924

Pictured are some of the Cairns and Tablets erected to commemorate their 1824 Journey of exploration

IN THIS CENTENARY YEAR THE REMAINS OF THE AUSTRALIAN EXPLORED SIGN AT BARBARANG IN THE 17th OF JUNE 1824 HE OPENED BY THE HIDEAWAY COUNTRY IN 1841 IN 1841 WITH CAPT. HUME HE DISCOVERED THE GOLDEN PLAINS. IN 1841 WITH CAPT. HUME AND W. H. HARRINGTON HE DISCOVERED THE SAND PLAINS. IN 1841 ACCOMPANIED BY CAPT. HOVELL AND HIS ASSIGNED MEN, HIS PARTY WAS THE FIRST TO REACH THE PORT PHILIP AND RETURN. IN 1841 HE DISCOVERED THE MOUNTAIN RANGES. DISCOVERING THE BOKAN RIVER. HE MADE THE FIRST JOURNEY DOWN THE SOUTH COAST AND OPENED A NEW ROUTE OVER THE BLUE MOUNTAINS. RECALLED AT BIRKENWOOD VILLAGE IN 1841 AND DIED AT "HUMMA COTTAGE" EARLY IN THE 18th OF APRIL 1841. HE WAS BURIED IN HIS WIFE ELIZABETH'S BURIAL GROUNDS OF 17th OF NOVEMBER 1841. THERE WERE NO CHILDREN FOR THE SAKE OF THOSE WHO BEAR HIS NAME I SHOULD WISH IT TO BE HELD IN REMEMBRANCE AS THAT OF ONE WHO WITH SMALL OPPORTUNITIES BUT LIMITED RESOURCES DID WHAT HE COULD FOR HIS NATIVE LAND. HUME. STATEMENT OF FACTS 1873. ERECTED BY 1848 ROTARY 1844.





The brass Hume & Hovell bicentenary plaque was moved from its temporary location at the Oxley Shire Hall to its now permanent home at the Oxley Memorial Park on Monday 2<sup>nd</sup> December 2024.









The Hume and Hovell Bicentenary Plaque now permanently located at the Oxley Memorial Park, Oxley Victoria.